

NINPAKU

Iwabitsu Sanada Ninja Museum

Authentic Ninja Experience Near Kusatsu Onsen

NINPAKU is one of Japan's leading ninja experience attractions, located in Gunma Prefecture near Kusatsu Onsen. Visitors can explore more than 300 authentic ninja artifacts, one of the largest permanent ninja collections in Japan, while enjoying hands-on activities including ninja costume experiences, shuriken throwing, laser trap challenges, and the VR sword-fighting attraction "VS Yukimura Sanada." Combining history, entertainment, and interactive experiences, NINPAKU offers an unforgettable cultural experience for families, FIT travelers, educational groups, and international visitors.



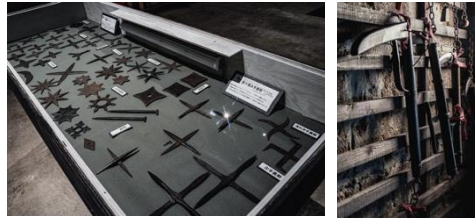
Become a Ninja.
Explore Authentic Ninja History.
Enjoy Japan's Ninja Culture.

Tokyo: 2 hours / Kusatsu Onsen: 40 min / Indoor Attraction
Family Friendly / FIT & Groups Welcome

WHY NINPAKU?

① Authentic Ninja Collection

300+ authentic ninja artifacts



② Hands-on Experiences

- Ninja Costumes
- Shuriken Experience
- Laser Trap Challenge



③ VR Attraction

VS Yukimura Sanada



④ Exclusive NARUTO

Available only at NINPAKU.

Take home limited-edition NARUTO



⑤ Ideal for Inbound Tourism

- Near Kusatsu Onsen
- Easy day trip from Tokyo
- All-weather attraction



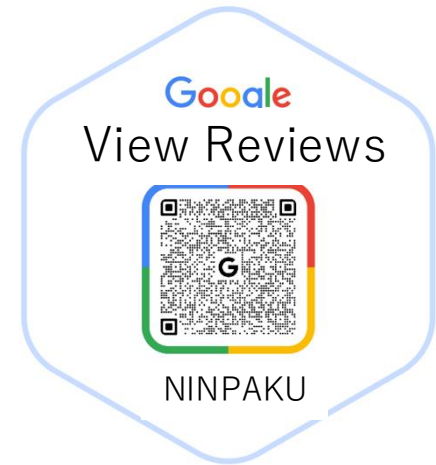
TOUR OPPORTUNITIES

Recommended for:

- FIT Travelers
- Family Travelers
- Educational Tours
- Incentive Groups
- Cultural Experience Programs
- Anime & Japanese Culture Fans

Ideal in combination with:

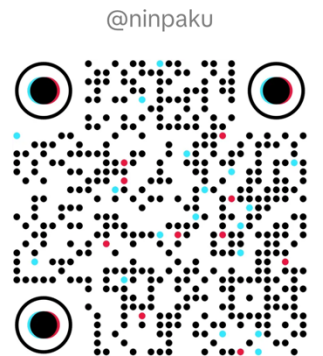
Kusatsu Onsen / Shima Onsen /
Ikaho Onsen / Iwabitsu Castle / Agatsuma Gorge



Website



Instagram



TikTok

Email

iwabitsu@shinobinoran.com